

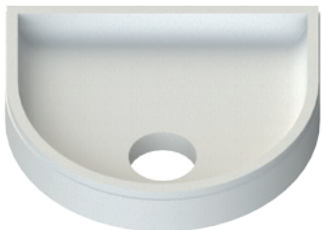


Tub and shower tray supports

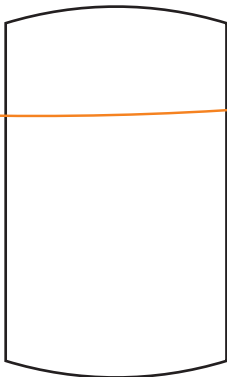
Bathroom design for the tub and shower area

The right support for every tub.

SCHEDER MULTISTAR®
tub and shower tray supports are made
from high-quality EPS.



Decide in favour of this alternative:
fast, clean, and technically inspired.
Over 2600 different models are available.



SCHEDER's innovative tub support
technology avoids the usual need for
masonry work when installing a tub.



The advantages are obvious.

- No need for labour-intensive, dirty masonry work
- Rapid and reliable installation
- Heat insulation
- Noise protection
- Excellent fit (like a made-to-measure suit for your tub or shower tray)
- CFC-free



MULTISTAR® tub supports
work behind the scenes.



SCHEDER MULTISTAR®
tub supports guarantee the reliable
coordination of appointments,
saving time and money, thanks to
their efficiency in installation.



SET THE TONE WITH LIGHTING

Light creates a feeling of well-being, and multiple light sources in one space have a particularly spectacular effect. The LED lighting, which can be installed at the factory in the recess of the SCHEDEL wall module, provides the perfect illumination ambiance in the shower. Further LED spotlights in the add-on module also set the bath tub in the perfect light. The add-on module is always installed in combination with a tub support and is coordinated perfectly with the tub support's length. The shower tray support inset into the screed allows flush installation of the extra-flat shower tray.



Shower tray support
970 x 970 x 100 mm



Room-height wall module, depth 250
for free-standing installation
Art. no. VISION0015

Oval tub support
1770 x 770 x 600 mm



Corners for oval tubs
SH 31035



Half-height tub add-on module
with one recess

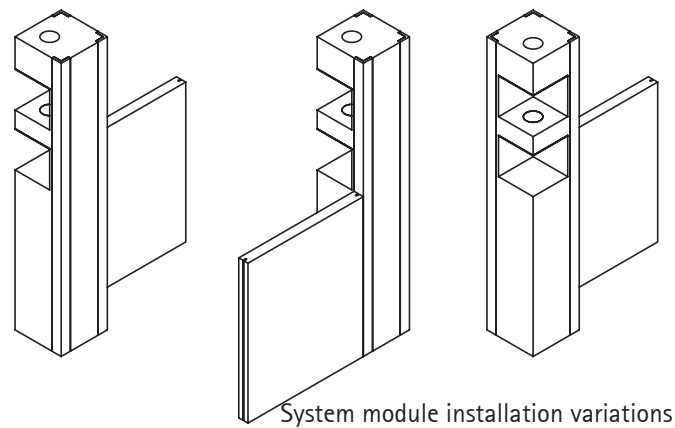


APPEALING THROUGH INDIVIDUALITY

Individuality is the number one priority of modern design. With the bath modules from SCHEDEL, this can be easily achieved. The half-height wall element can be installed on all three

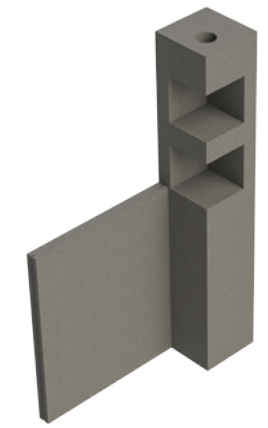
fully sealed edges of the shelf module. SEAT SALO, which is continued outside the shower. The shower tray has a very generous appearance in XXL. The SEAT SALO, which is continued outside the shower, can be fitted thanks to the SCHEDEL tub support and allows immediate tiling without any further masonry work.

Tub support
1580 x 990 x 570 mm

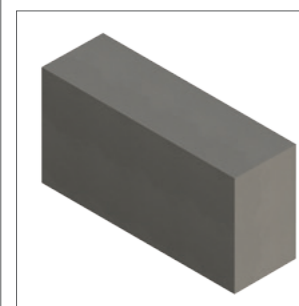


System module installation variations

System module
with half-height
wall element
Art. no. VISION0021

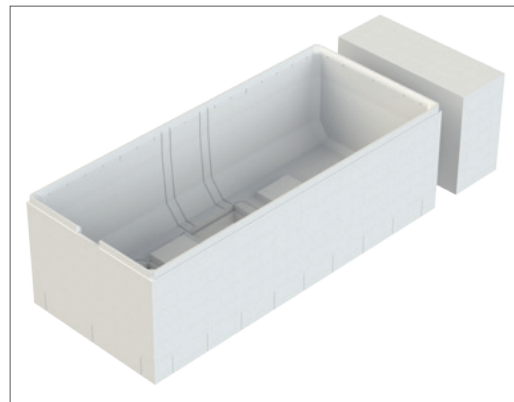


SEAT SALO 400
Total length 2750 mm
Art. no. SEAT290

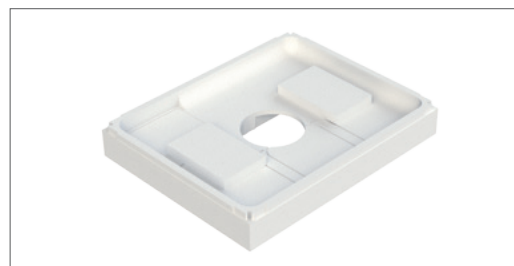


Shower tray support
1670 x 970 x 140 mm

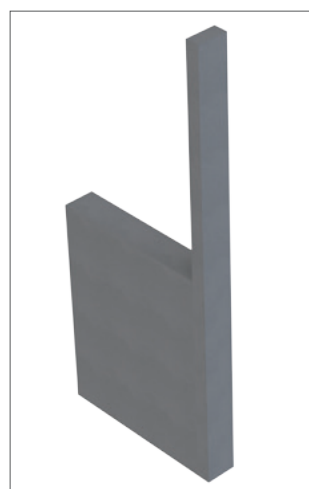




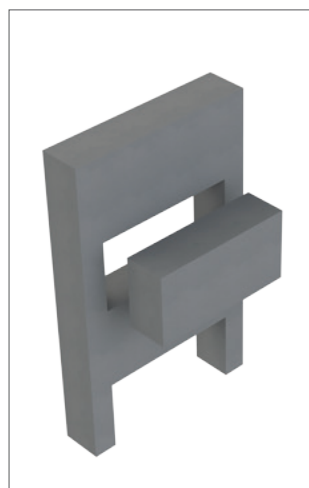
Tub support
1770 x 770 x 570 mm
With shelf module 770 x 320 mm
to match the tub support



Shower tray support
770 x 970 x 140 mm



Half-height wall module
incl. supplementary element
Art. no. VISION0012



WC top module
Art. no. VISION0026

COMBINE AS NEEDED



Solutions that answer needs and perfectly coordinated modules create a harmonious overall impression. The half-height SCHEDEL wall module comes with a supplementary element for installation of the glass shower wall, which can be mounted either to the glass shower wall or ceiling. To match the width of the tub support, a block module creates storage options for various bath utensils. The WC top module is an additional bonus. This is coordinated with the WC's concealed module and also offers storage options.



This design idea inspires through its use of round shapes. The centrepiece of the light-permeated room is the bath tub with its all-round shelf and support for fittings. An installation shaft inside the support ensures that the fittings are simplicity itself to install. The shower area is equipped with a wall module. Two built-in recesses, each for the installation of an LED spot, provide space for shower gel and other care products. The prepared installation shaft in the module means that cutting and chiselling work can be avoided.

PERFECT IN FORM AND FUNCTION

Quarter-circle shower tray support
1170 x 1170 mm
Support height 170 mm

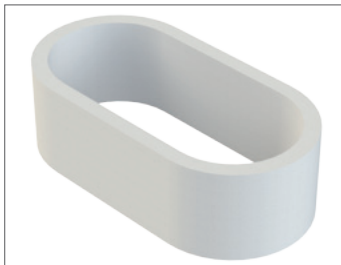


Wall module
Width 1200 mm
with two recesses
and installation shaft
Art. VISION0020

Oval tub support
1770 x 765 x 570 mm



Oval all-round shelf
for oval tubs
Storage width approx. 80 mm



Fittings support
with installation shaft
Art. no. VISION0010

THE MADE-TO-MEASURE SUIT FOR TUBS AND SHOWER TRAYS

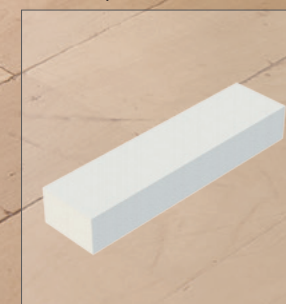
The generous, asymmetrical double bathtub and spacious shower tray sit in the tub supports from SCHEDEL as though they were made to measure. The shower tray and shower supports are installed on the SCHEDEL room-height add-on module. A recess provides space for shower gel and shampoo. The exclusive architectural style of the room can be quickly created with little mess thanks to the ready-to-install modules from SCHEDEL. And you save up to 50% on the installation time.

Room-height wall module
Depth 175 mm
for wall mounting
Art. no. VISION0045

Tub support
Asymmetrical on the right
1770 x 1170 x 430 mm

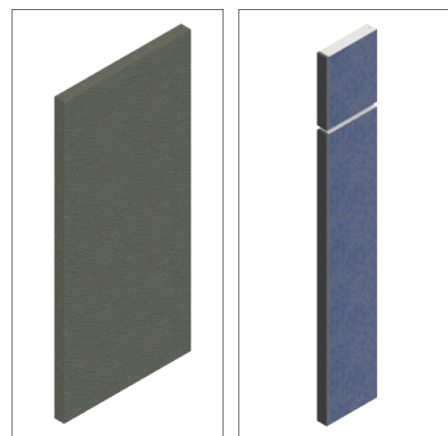


Step element
Standard
250 deep, 150 tall



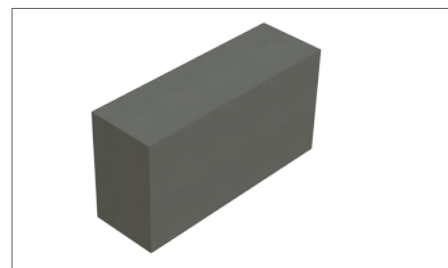
Shower tray support
1370 x 970 x 170 mm





System wall
Depth 80 mm
Art. no. SH 32960

SEAT add-on module
400 mm deep
Art. no. VISION0023



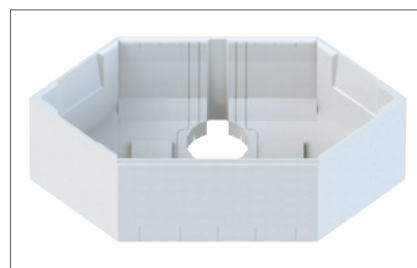
SEAT Salo simply flex
400 mm deep
Art. no. VISION0039



Shower tray support
1170 x 870 x 140 mm



Tub corner module
Art. no. VISION0040

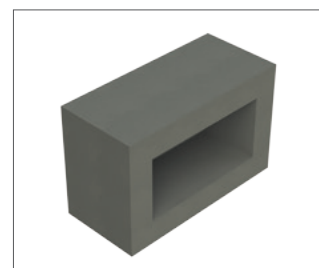


Tub support
1870 x 870 x 570 mm
For hexagonal tub
1900 x 900 mm

EXCITING BATH CONCEPTS



The SCHEDEL system wall, installed quickly and cleanly, creates an exciting and individualised room architecture. The SEAT add-on module is adapted at the side to the comfortable seating element in the shower, and allows the glass shower wall to be installed without a seat cut-out. It consists of two parts, so that it can be installed at shower cubicle height or room height, as wished. The MULTISTAR® tub corner module is integrated harmoniously into the room and enhances the design of the bath. As supplied, it is adapted to the tub support. An installation shaft allows the quick installation of fittings with as little mess as possible.



Tub add-on module
Seat height
870 mm wide
400 mm deep
Art. no. VISION0008

SPACE FOR STORAGE

Bath modules from SCHEDEL offer all manner of storage options in the middle of the room. The free-standing half-height add-on module not only looks attractive and spacious, but it also cleverly highlights decorative articles or a green plant. Positioned next to the tub, or anywhere in the room, the seat-height tub add-on module provides scope for interesting design.

Half-height wall module including supplementary element for installation of the glass partition
Width 1000 mm
Art. no. VISION0012

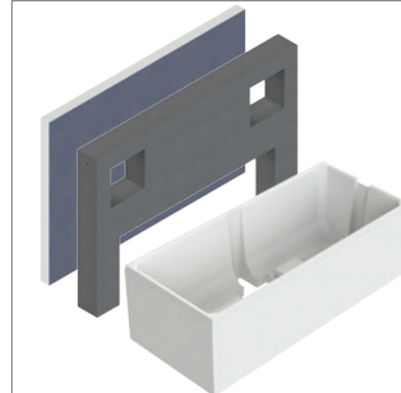


Shower tray support
1470 x 970 x 170 mm

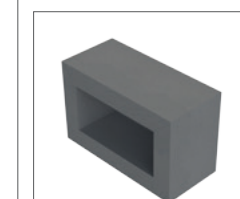


Half-height tub add-on module
1770 mm wide
Integrated recesses prepared for the installation of an LED spotlight, including cable duct

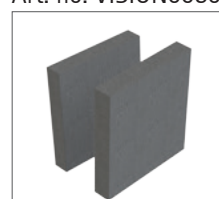
For free-standing installations, SCHEDEL offers a sealing element to close off the recesses.
Matching tub support
1770 x 770 x 570 mm to the central waste tray
Art. nos. VISION0052 and VISION0042



Add-on module
Seat-height tub
870 mm wide
Art. no. VISION0008



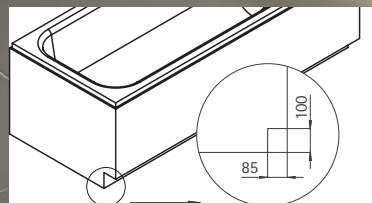
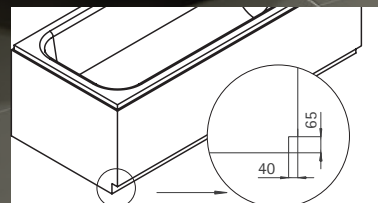
Extension set for add-on module can be shortened during installation
Art. no. VISION0050



MULTISTAR® TUB SUPPORT AND VISION BATH MODULES

Elements from SCHEDEL
prepared for the installation of light strips

Make something special an everyday occurrence. Install your bathtub or shower the way you want it. Use shelves, steps or wall modules with recesses. With straight cut-outs integrated at the factory into the tub supports, seats, walls or other design elements that are prepared for the installation of LED light strips, you can create precisely the right impression and immerse the bath in the perfect mood lighting. Alongside our standard range, personalised, made-to-measure solutions can also be created.

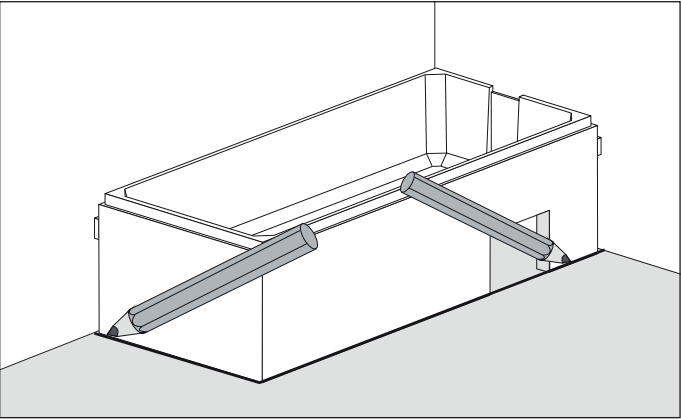


SCHEDEL elements:

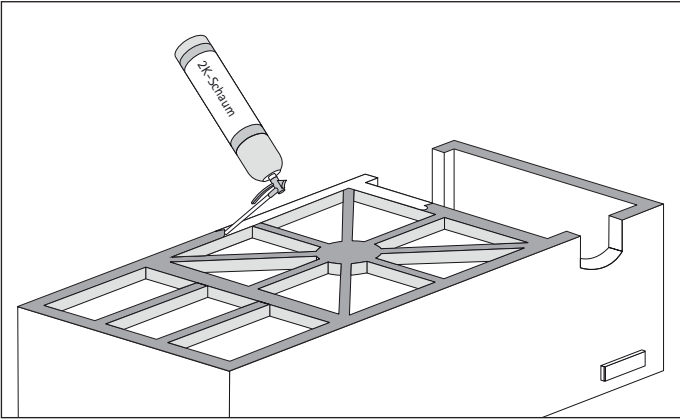
- Pedestals with preparation for the installation of light strips
- Block with built-in roof slope
- Pentagonal shower tray support
- Tub support prepared for the installation of light strips
- Half-height wall module

MULTISTAR® tub support

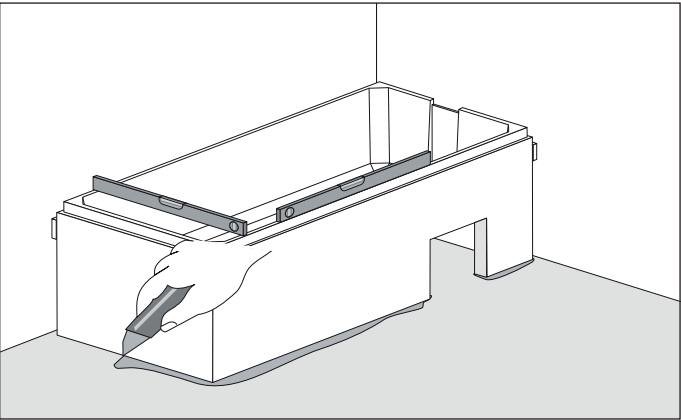
Installation



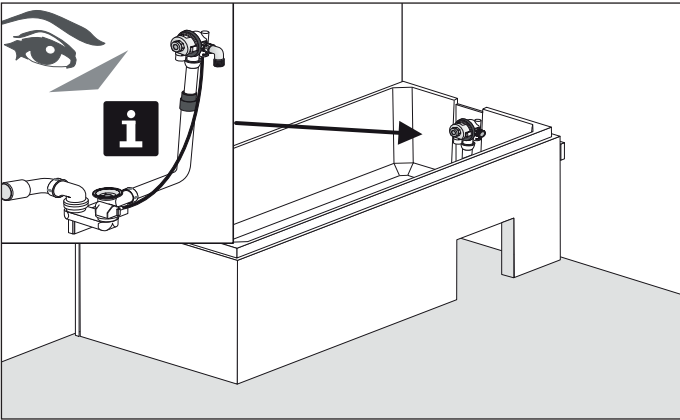
Position the tub support with the wall spacer mounted on the floor. Mark out the resting surfaces of the tub support. The installation surface must be clean, free from grease, and level. Level out any uneven areas using liquid screed or suitable material. Make the cut-out for the inspection opening.



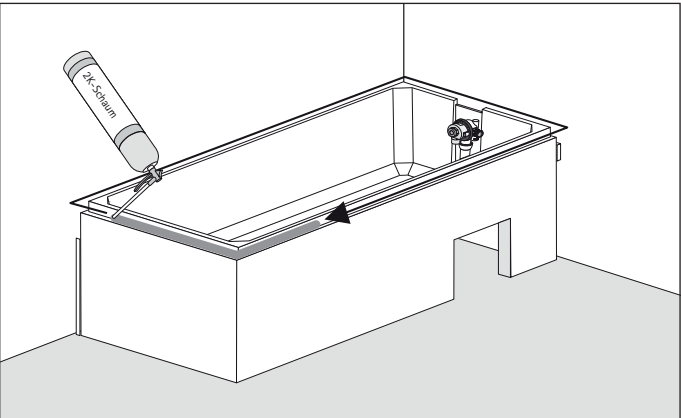
Cut out the pipe channels / pipe guides needed. Apply SCHEDEL MULTISTAR® 2K installation foam to the ribs on the tub support.



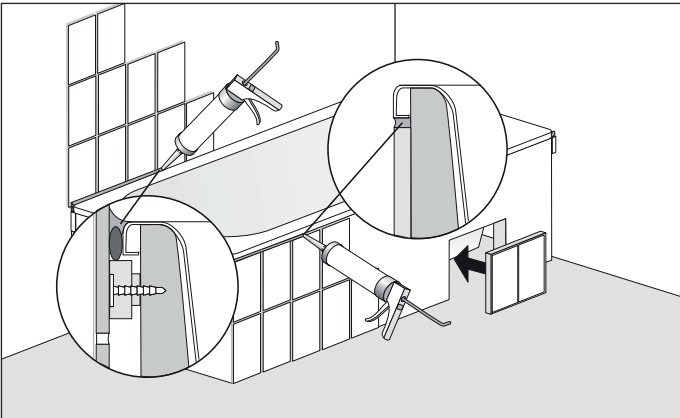
Position the tub support, aligning it horizontally. After around 30 minutes, remove any 2K installation foam that has leaked out.



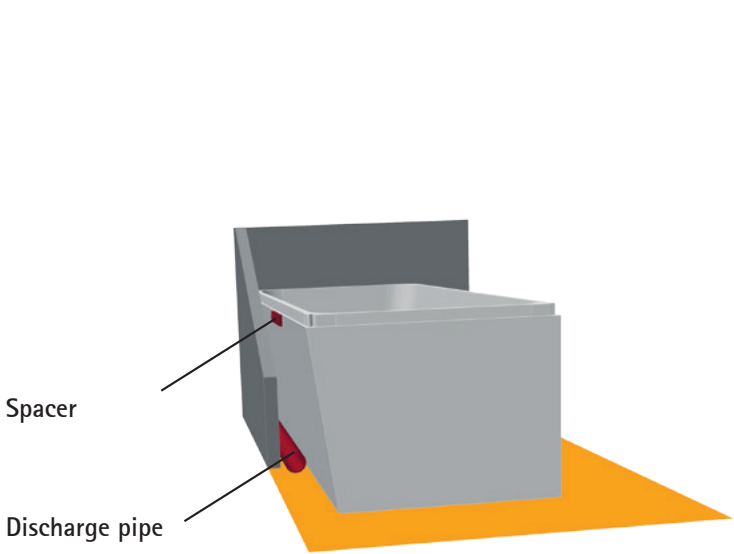
Install the SCHEDEL MULTISTAR® outflow fittings. Insert the tub. If the tub gives under strain at the edges and/or floor area, support it with 2K installation foam. Connect the outflow fittings to the tub. Ensure an even overhang and distance from the wall. Check for leaks.



Before inserting the tub, apply installation foam all the way around on the edge of the tub support.



Close the inspection opening. Use suitable sealant to seal all joints and gaps.



On SCHEDEL MULTISTAR® tub supports with one or two angled sides, discharge pipes can be laid effortlessly behind the tub support.



Many tub supports can be supplied with washing machine connections as required.

Installation accessories



MULTISTAR® 2K installation foam*
400 ml cartridge
12 cartridges in each box

- Ideal product for fast and professional installation
- Levels out uneven areas on the floor perfectly.
- Allows rapid alignment of the tub support.
- Guarantee of maximum stability



MULTISTAR® installation kit
for the permanent sealing and sound-insulated connection of the tub to the wall as per the applicable DIN regulations

- consisting of:
- Tub sealing tape
3 m for tub supports
2.20 m for shower tray supports
 - 2 butyl filling corners
 - Sound insulating tape
 - Safety profile
 - Tub edge protection strips
 - Round cord
 - 2 cleaning cloths



MULTISTAR® plumbing kits
for all popular tub models

Fig. Viega "multiplex" model with chrome-plated colour set With odour trap and 45° outflow pipe for normal tubs and deep shower trays

Other models can be found in our price list.



MULTISTAR® Installation adhesive*
310 ml cartridge

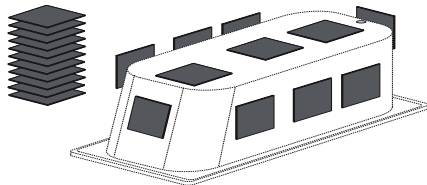
MULTISTAR® SiLENCIO SOUND INSULATION

The right sound insulation system for every project – sound protection for tub supports

Minimum requirements

Steel bathtub

consisting of
11 bitumen mats
250 x 250 mm

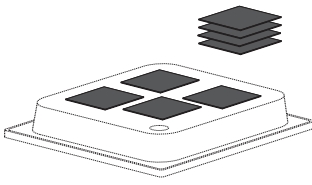


Download PDF
Installation instructions
EBA40446

DIN 4109 basement rear ≤ 30 dB(A)
VDI 4100 basement rear ≤ 30 dB(A)

Steel shower tray

consisting of
4 bitumen mats
250 x 250 mm



Download PDF
Installation instructions
EBA40447

DIN 4109 basement rear ≤ 30 dB(A)
VDI 4100 basement rear ≤ 30 dB(A)

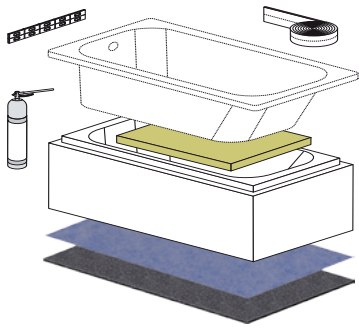
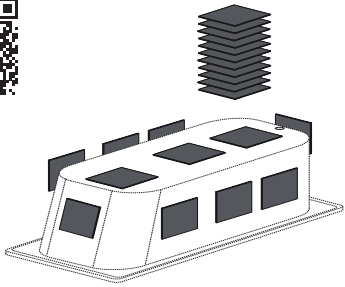


More demanding requirements

Steel bathtub

consisting of
mineral fibre mat
fleece-laminated
PE sealing sheet
Rubber granulate mat
11 bitumen mats 250 x 250 mm

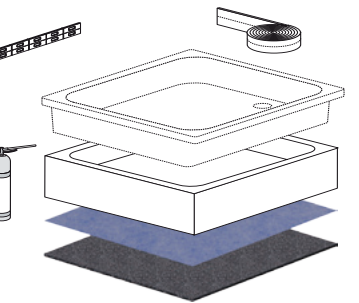
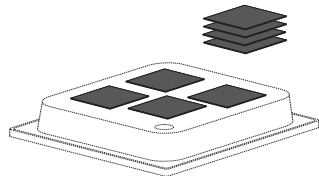
Download PDF
Installation instructions
EBA40414



Steel shower tray

consisting of
mineral fibre mat
fleece-laminated
PE sealing sheet
Rubber granulate mat
4 bitumen mats 250 x 250 mm

Download PDF
Installation instructions
EBA40413

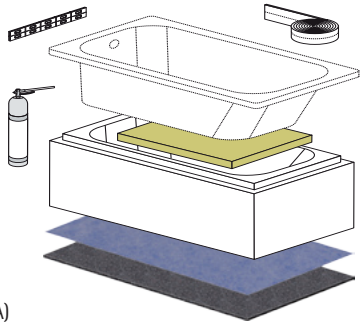


Acrylic bathtub

consisting of
mineral fibre mat
fleece-laminated
PE sealing sheet
Rubber granulate mat



Download PDF
Installation instructions
EBA40412



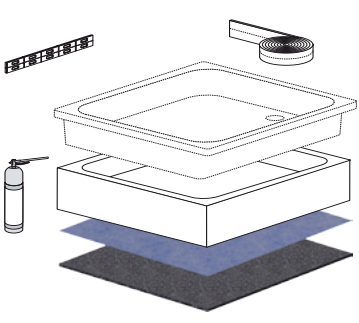
DIN 4109 basement rear ≤ 25 dB(A)
VDI 4100 basement rear ≤ 24 dB(A)
ÖNorm B 8115-2 basement rear ≤ 25 dB(A)

Acrylic shower tray

consisting of
fleece-laminated
PE sealing sheet
Rubber granulate mat



Download PDF
Installation
instructions
EBA40411



DIN 4109 basement rear ≤ 25 dB(A)
VDI 4100 basement rear ≤ 24 dB(A)
ÖNorm B 8115-2 basement rear ≤ 25 dB(A)



SCHEDER Bad+Design GmbH
Oelsnitzer Strasse 55
08223 Falkenstein, Germany

Tel.: +49 (0)3745 745 0
Fax: +49 (0)3745 745 217
info@schedel-gmbh.de
www.schedel-badinnovation.de

Advice near you: